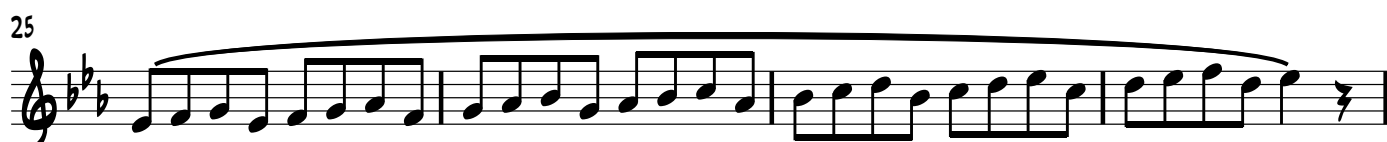
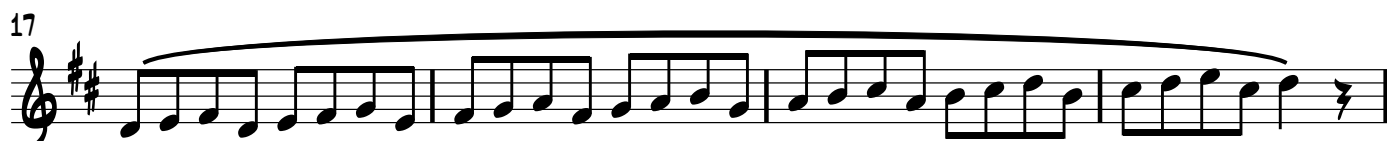


# CLARKE SECOND STUDY EXTENSION

CLARKE/DESHLER

♩ = 100



2

37



81

125



129



133



137



141



145



149



153



157



161



165





**NOTES:**

1. MAKE GRADUAL ADJUSTMENTS AS YOU ASCEND REGISTERS
2. USE SLURRED AIR WHEN ARTICULATING
3. TAKE BREAKS WHEN NECESSARY
4. KEEP THE SOUND AND KEEP THE FLOW